



# ROTH SUGARBUSH NEWS



PHOTO BY EMILY SMOCZYK

## OPEN HOUSE: ANOTHER YEAR IN THE BOOKS!

[MORE ON PAGE 3](#)

## WHAT'S NEW?

We've already uploaded a couple of seminars on our youtube channel and some product demos. Jim Adamski sets up and uses a 9" Vacuum filter press, wesfab short bank filter press, and our hobby bottler in our new videos! If there are any videos you want to see let us know!

Jim Adamski has been collecting old issues of the Maple Digest for the last 60 years with his dad. We've scanned a couple pages and included them in our newsletter this month for a blast from the past!

## VINTAGE MAPLE DIGEST PAGES

[MORE ON 5](#)

HAVE A QUESTION OR WANT TO SHARE YOUR STORY?  
EMAIL [SAMARA@ROTHSUGARBUSH.COM](mailto:samara@rothsugarbush.com) & WE'LL SHARE ON OUR NEWSLETTER!

# WHAT'S HAPPENING AROUND THE SUGARBUSH?

## MARCH

After a couple of cold weeks and the inches of snow we got, it's all melted in the past week from our warm weather up here! We're finishing up the woods now that it's warmer and gearing up for the season! Last year we had sap flowing during our open house and this year seems to be on track for a normal tapping time! We don't anticipate the sap to run for another week or so, but all you can do in the maple world is hope you can predict a close start time! Good luck this season!

## CHECK-IN WITH PETE

Thank you to everyone who came to the open house. We had a great crowd, even through some snowy weather on Saturday! I'd also like to thank Mark Cannella for coming from the University of Vermont to speak and do his round tables, he did a great job!

People have started to ask about tapping. Some people have started in the southern parts of the state. We're finishing putting our lines up in our woods. For those of you who tap bags or buckets, keep an eye on the extended forecast this week and next to see if it'll stick to good weather.

We still have nothing affecting us with Tariffs yet. We haven't seen any changes in our shipments and we'll continue to keep an eye on what happens. Once we do know what it means for us, we'll put out a video on our YouTube channel!

*Pete*

# 2025 OPEN HOUSE!

## WRAP UP



## NEWS & UPDATES

It was a busy open house last month and we want to thank everyone who came! We love seeing fellow sugar makers come together and chat with each other!

If you couldn't make the Open House, some of our seminars have been posted on our YouTube (Roth Sugar Bush) if you want to check it out! Nate Bissell (Bissell Maple Farm) also made a video on his trip to the open house from Ohio!

We had a good group each day with Mark Cannella that went on for a few hours! Unfortunately we couldn't record the discussion because of privacy with the research presented, but it was great to get some producers together!

## ROUND TABLE WITH MARK CANNELLA!

# Geauga County Tours

Two summer sugar bush tours were held the evenings of August 20 and 21, 1962, in Geauga County. All of these tours started at 7:00 p.m., D.S.T. On August 20 the first stop was at the Warble Farm (Fred Lindow) on Pettibone Road just east of Route 306 in Bainbridge township. Fred does an outstanding job of producing high quality maple syrup, and Fred and his family have built up an excellent trade in maple syrup and maple products. Fred built a plastic hood over the evaporator and says that it practically eliminates steam in the sugar house. A log cabin has been erected near the road for maple syrup sales and maple products manufactured at the Lindow sugar camp. The combination of sugar house and sales room makes a pleasant stop for the retail customer, and a fine place to promote the sale of quality maple products.

The second stop that evening was at the Howard Taylor Farm on Haskins Road, just south of Bainbridge-Auburn Road. Howard and Bill Taylor have developed a central evaporating plant for maple syrup produc-

tion. This addition was built onto their sugar house last year. Maple sap flows continuously through their original evaporator into the oil-fired evaporator pans of the new plant and from there into the finishing pan. The finishing pan is operated by a steam generator.

Howard demonstrated the ease of processing maple syrup in the finishing pan. The maple producers were startled when the syrup began to boil in a matter of a few seconds, after the steam valve had been opened. This demonstration vividly illustrated the ease of reprocessing and packaging maple syrup for orders throughout the year. Howard said that if he was given two hours notice that he could be ready to reprocess bulk syrup and package the order.

Maple sap was purchased from sugar bush operators last season. This operation will be expanded this coming year. Last year maple syrup was produced from 8,000 tapholes. Howard hopes to reach his present capacity of 12,000 tapholes in 1963. Producers may want to discuss this arrangement with Howard in the near future. A 1000 gallon tank truck is used to transport maple sap over greater distances.

There were many more aspects of the maple products business to see at all of these sugar bush operations; but if you weren't on the tour, we would suggest that you stop and see these producers.

The twilight sugar bush tour on Tuesday evening to the Ralph and Jeannette Grosvenor sugar bush and the Bob Fenwick sugar bush in Claridon township emphasized the management of young maple stands and woodland improvement. Both of these sugar bush operations are outstanding examples of good sugar bush management.

The Grosvenor sugar bush is an excellent example of thinning young maple stands to increase the growth and renewal of sugar maples. Ralph

has helped these young maples to practically double their growth rate as a direct result of proper thinning in the sugar bush. The renewal of old sugar bush stands with replacements is of paramount importance to the maple producer.

It is possible to receive up to 75% of the cost of woodland improvement through the County ASC B-10 practice. Farmers should contact the ASC Office in Burton for further information on this program. We would suggest that you contact them after September 1 and ask about this important practice.

Bill Cowen, Extension Forestry Specialist at Columbus, and Bob Fenwick explained some of the factors involved in selectively harvesting trees and managing the sugar bush. Bob has really improved the woodlot on his farm by selectively cutting trees that are matured, diseased, or were of poor quality.

Elm trees are being removed from the woodlot because the Dutch Elm disease has limited their value. Beech trees are being removed because of their soft centers and the consequent early development of hollow stems.

Ture Johnson, Farm Forester at Burton, Ohio, can help woodlot owners with many of these woodlot management problems and is a well trained specialist in this field. Ture also is involved in supervising the B-10 woodlot practices under the ASC program.

Ralph Grosvenor and his daughter, Mrs. Charles Kellogg, furnished the group with doughnuts, cookies, and coffee at the forestry meeting in the Grosvenor barn after the tour. We are indeed grateful to the Grosvenor's for their fine hospitality.

I would suggest that you talk with some of the people involved in this woodland improvement program to more fully appreciate the importance of forestry and sugar bush management.

**Leland Schuler**  
Extension Agent  
Burton, Ohio

## The AYRES HYDROTHERM

The only single tool available which reads the table grade weight of maple syrup. While you draw off, the weight changes. While going through filters, it changes. While heating to can, weight changes.

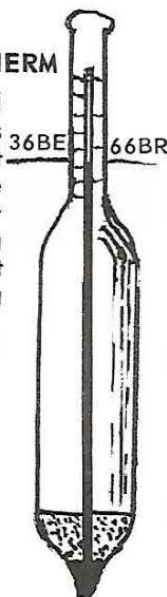
The Tip-of-the Red shows how much.

Price: \$6.50

Add 50¢ if ordered by mail.

Order from your equipment house:

**FAYRPORT FARM**  
Shaftsbury, Vermont  
FAIRFAX AYRES, Prop.



# MAPLE PHOTO CONTEST!

Last year, we restarted our maple photo contest. This year, we're improving the winner prize and adding a second place prize!

First place will get the gift box below with a \$25 gift card and will be picked from our staff here. Second place will be chosen through open online fan voting and receive a \$15 gift card!

If you'd like to enter, you can email [samara@rothsugarbush.com](mailto:samara@rothsugarbush.com). For the rest of the rules and details, you can find them on our website under Upcoming events!

# Maple Photo Contest!



NEW PRIZES  
STAFF & FAN  
VOTE!  
MORE WINNERS!

ENDS 30  
APRIL  
2025